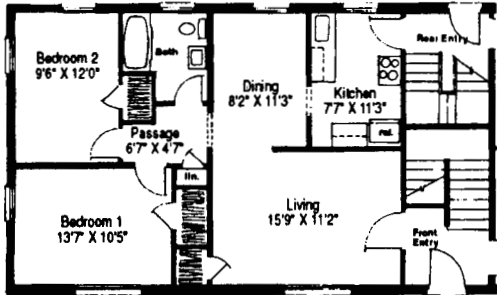
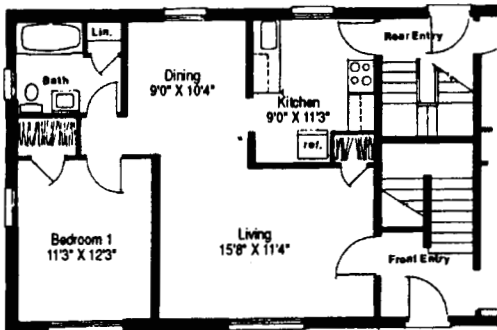


ARDMORE TERRACE APARTMENTS

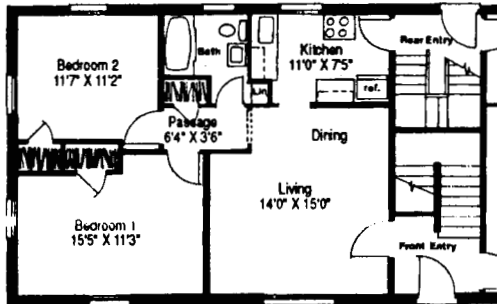
Office: 2325 Cloverdale Ave
Winston-Salem, NC
(336) 724-1721
Weekdays 8:00 - 5:00
Saturday 9:00 - 1:00



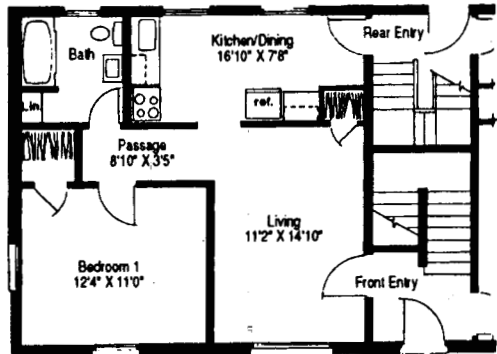
Type A - 4 ½ Room Unit
921 Sq. Ft.



Type B - 3 ½ Room Unit
780 Sq. Ft.



Type C - 4 Room Unit
847 Sq. Ft.



Type D - 3 Room Unit
704 Sq. Ft.

Type A ___ Per Month Type C ___ Per Month

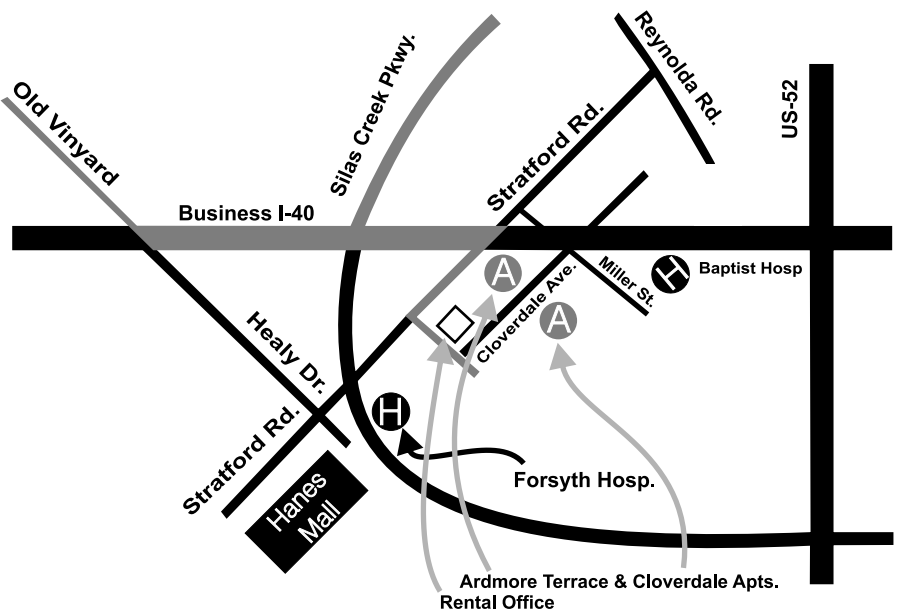
Type B ___ Per Month Type D ___ Per Month

FEATURES:

- Carpet And Hardwood Floors
- Hot and Cold Water Included in Rent
- Storm Windows
- Laundry Facilities
- Central Heating & Cooling
- Cablevision - (Expanded basic 1-77, Premium Channels Optional)
- Dishwasher
- Electric Range & Frost Free Refrigerator
- Pets - 25 lbs. or less Allowed with Agreement & Fee & Rent Adjustment
- Washer & Dryer Connections

Extra Services:

- 24-Hour Maintenance
(Emergency Maintenance Only after 5 pm & Weekends)
- Notary Public
- Well Trained Staff to Help You



- 3.3 Miles From NCSA
- 3.4 Miles From WSSU
- 0.5 Miles From BGSM
- 3.0 Miles From WFU
- 2.3 Miles From Salem College

since 1947
Wilson-Covington
CONSTRUCTION CO. INC.