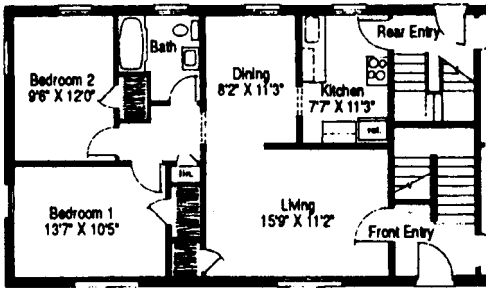


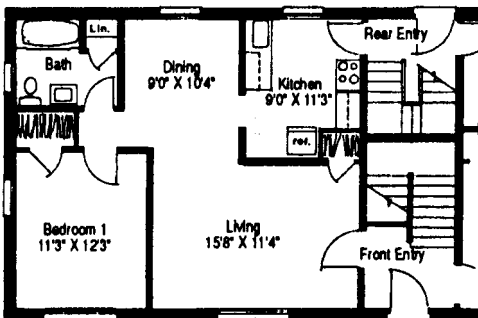
# CLOVERDALE APARTMENTS

Office: 2325 Cloverdale Ave  
 Winston-Salem, NC  
 (336) 724-1721  
 Weekdays 8:00 - 5:30  
 Saturday 9:00 - 1:00

“Affordable  
 Convenient  
 Living”



Type A  
 4 1/2 Room Unit  
 921 Sq. Ft.



Type B  
 3 1/2 Room Unit  
 780 Sq. Ft.

Unit A \_\_\_\_\_ Per Month

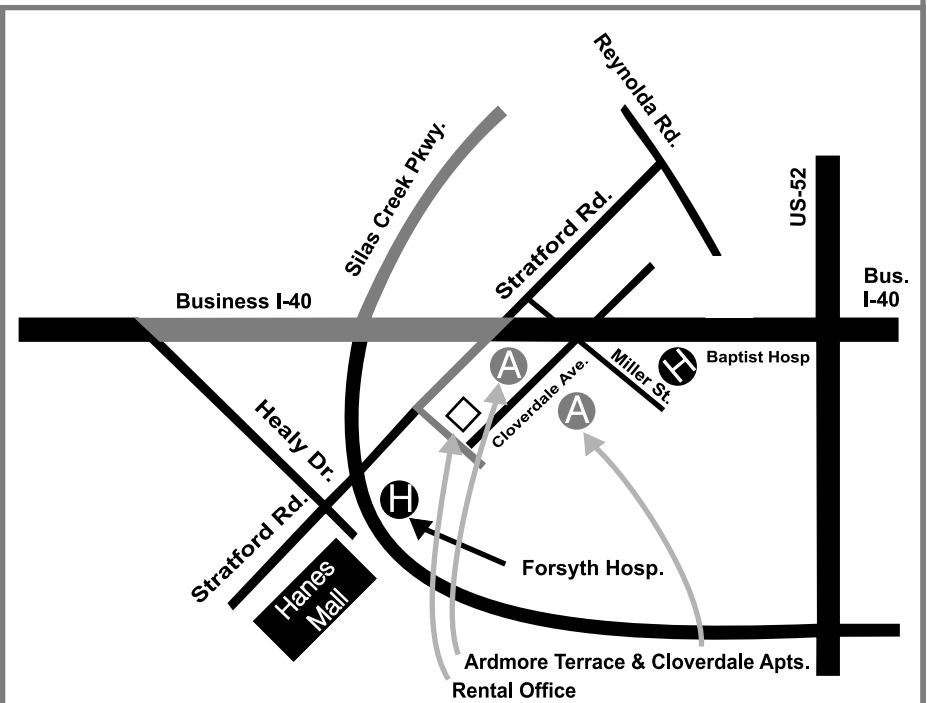
Unit B \_\_\_\_\_ Per Month

## FEATURES:

- Large Rooms
- Water Included
- Storm Windows
- Laundry Facilities
- Central Air & Heat
- Cablevision - (Expanded basic 1-77, Premium Channels Optional)
- Dishwasher
- Electric Appliances
- Pets (allowed with agreement)
- Upstairs Units Carpeted

## Extra Services:

- Notary Public
- 24-Hour Maintenance  
 (Emergency Maintenance Only after 5 pm & w/ends)
- Well Trained Staff to Help You



- 3.3 Miles From NCSA
- 3.4 Miles From WSSU
- 5.0 Miles From BGSM
- 3.0 Miles From WFU
- 2.3 Miles From Salem College

since 1947  
**Wilson-Covington**  
 CONSTRUCTION CO. INC.