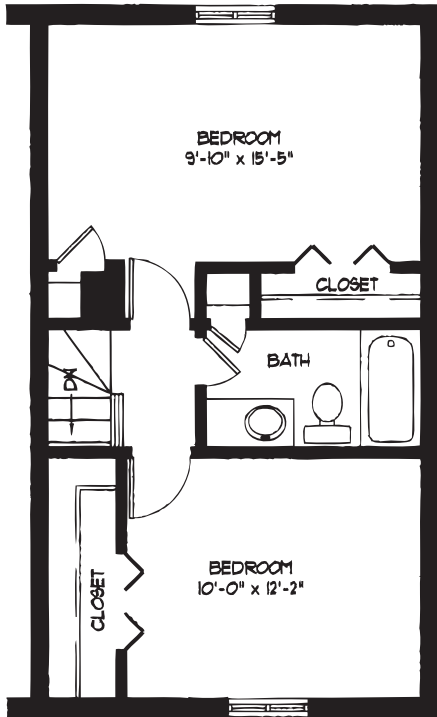
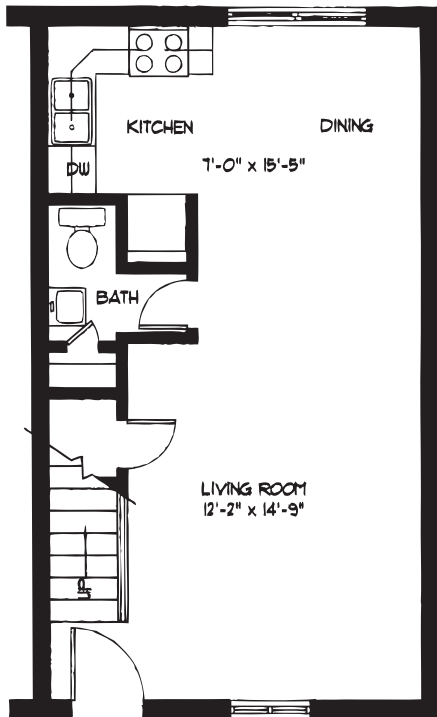


# Taylor Park Townhomes

Office: 2325 Cloverdale Ave  
Winston-Salem, NC  
(336) 724-1721  
Weekdays 8:00 - 5:30



**Second Floor**  
444 Sq. Ft.



**First Floor**  
444 Sq. Ft.

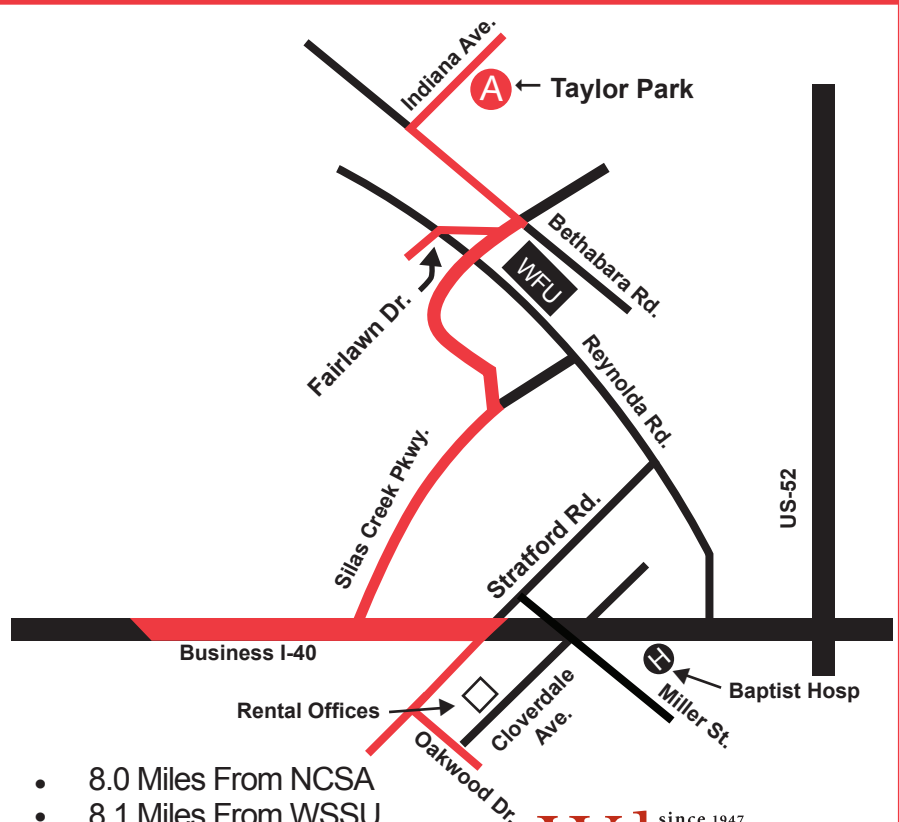
**Two Bedroom** \_\_\_\_\_ **Per Month**  
888 Sq. Ft. Total

## FEATURES:

- Water Included in Rent
- All Electric
- Central Heat & Air Conditioning
- Free Cablevision - (Expanded basic 2-77, Premium Channels Optional)
- Dishwasher
- Disposal
- Range
- Pets - (25 lbs. or less Allowed with agreement & Fee & Rent adjustment.)
- Carpeted

## Extra Services:

- 24-Hour Maintenance (Emergency Maintenance Only after 5pm & Weekends)
- Well Trained Staff to Assist You



- 8.0 Miles From NCSA
- 8.1 Miles From WSSU
- 5.2 Miles From WFUBMC
- 2.3 Miles From WFU
- 7.0 Miles From Salem College

since 1947  
**Wilson-Covington**  
CONSTRUCTION CO. INC.

E-mail: [rentals@wilsoncovington.com](mailto:rentals@wilsoncovington.com) • Website: [www.wilsoncovington.com](http://www.wilsoncovington.com)